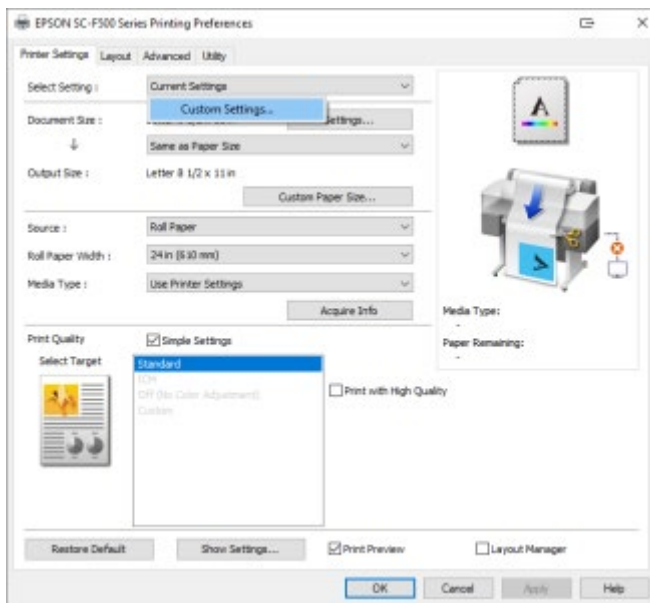


Import ICC

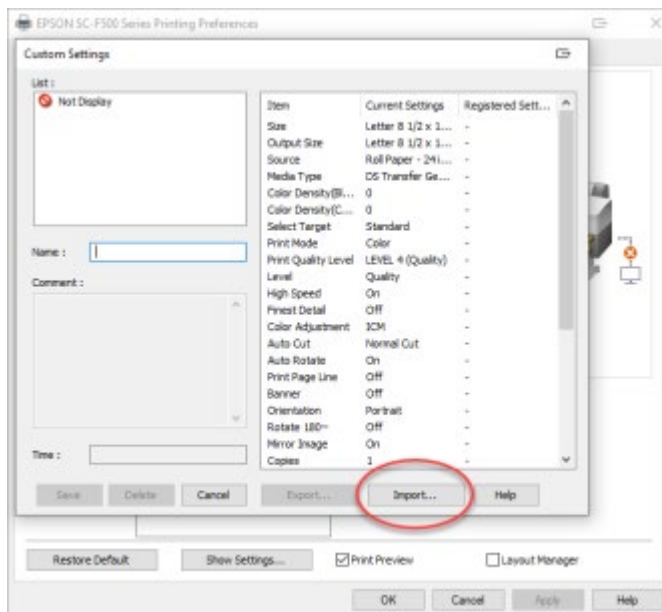
1. Place the ICC profile where you want.
2. Right mouse click -> Install Profile

Install the preset

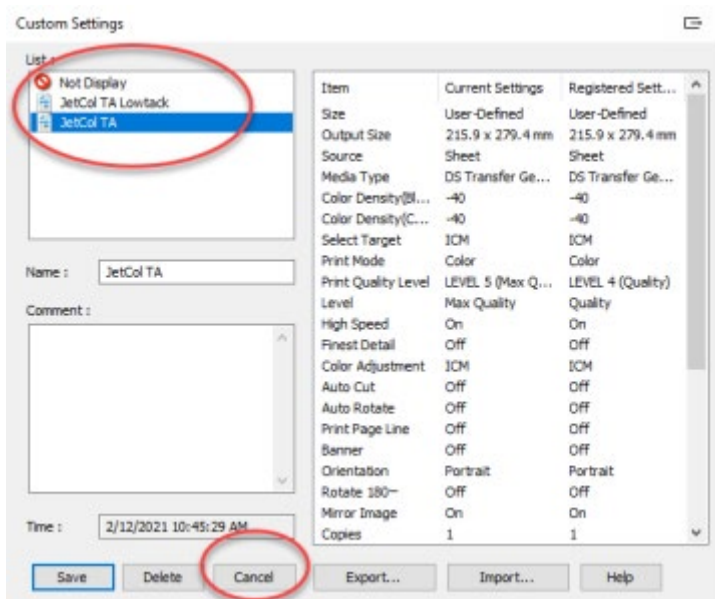
1. Go to your design software (e.g Photoshop)
2. Open a file and Print, now you can open the printer properties
3. Click Custom Settings from the dropdown menu



4.

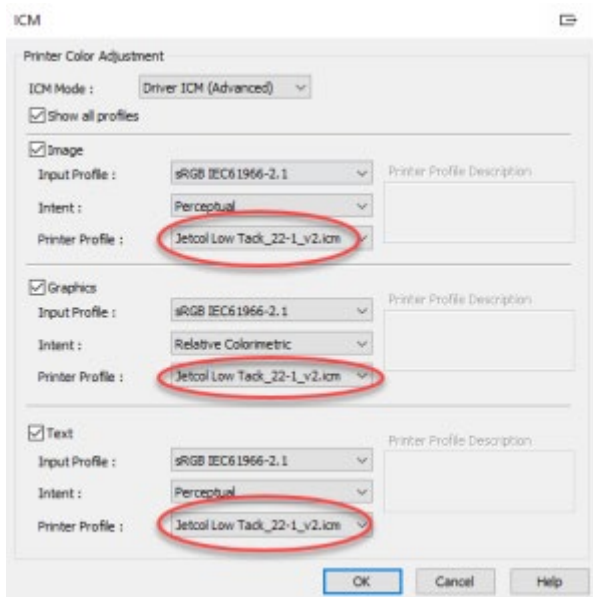
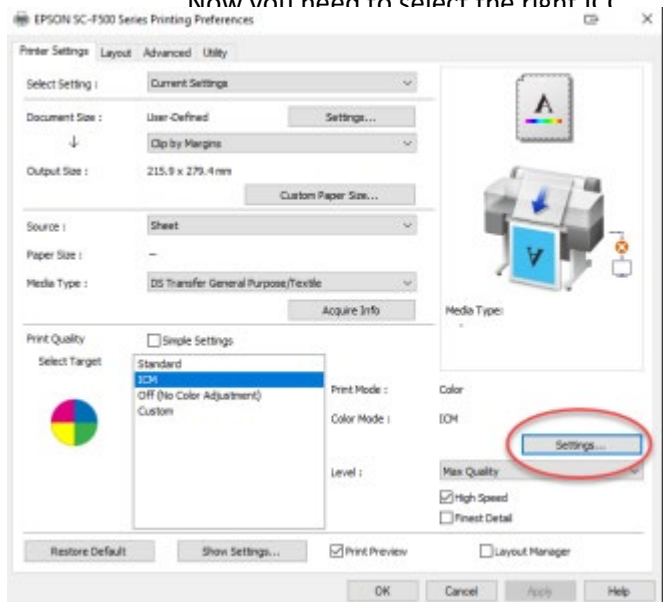


- Click Import and open the .sff file which belongs to your paper
- After importing the .sff click Cancel

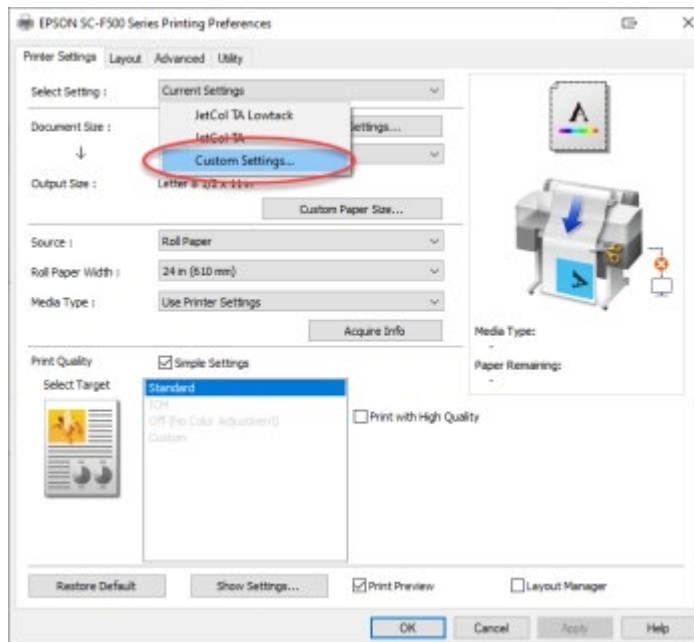


-
-
-
-
-
-

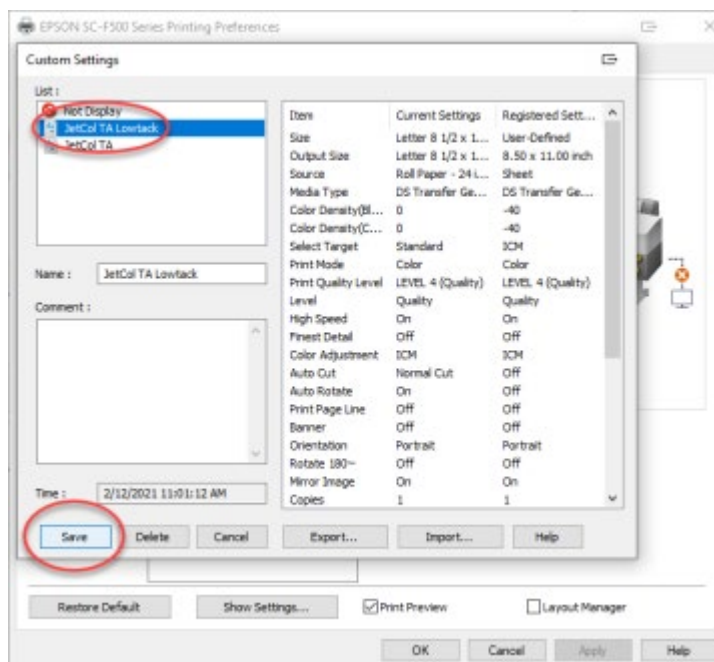
Now you need to select the right ICC



8. Make sure you save the settings, go to Select Setting and Click Custom Settings



9. Select the Paper and click Save, now all the right settings are stored.



10. In order to print with the right settings you just select the Paper in Select Setting, this will automatically give you all the right settings to print