

JetCol Thermal Adhesive (TA) Sublimation Paper Roll 105 GSM

JOHNSON PLASTICS
PLUS

JTA-24-131 2



INSTRUCTIONS

Recommended Equipment & Accessories

- Sublimation Roll Printers able to fit (minimum) 24" width rolls with 2" cores

Printer Settings

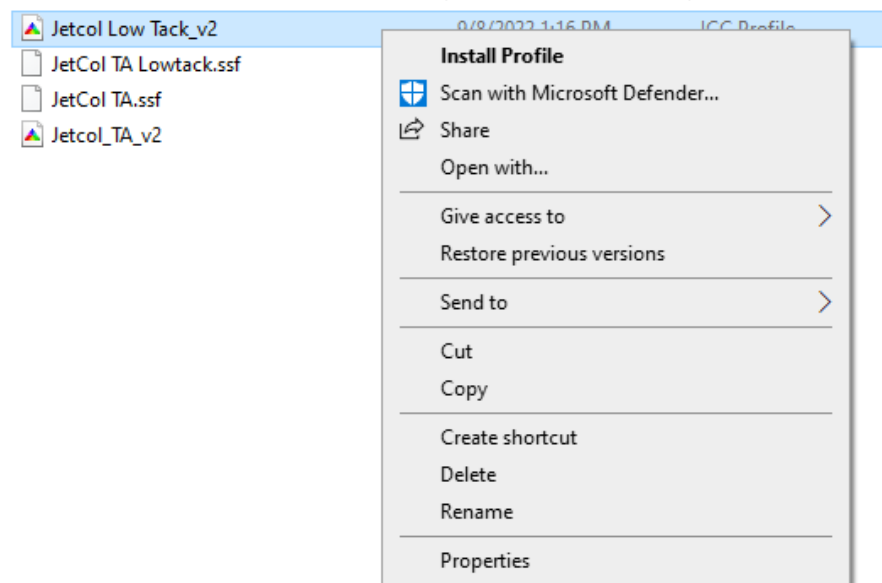
- Custom media setup
- Run paper feed and print head alignments for custom media
- Reference Paper General purpose textile
- Thick paper: On
- Platen gap: 2.1
- Back tension: Extra High
- Drying time per pass: 3.0-4.0
- Drying time page: 0.3-0.4

Print Driver Settings

- Print quality: Standard
- Level: Quality
- ICM mode Driver: Basic
- Printer profile: Epson Standard
- Advance media control/Color Density: Black -25%, Color -25%

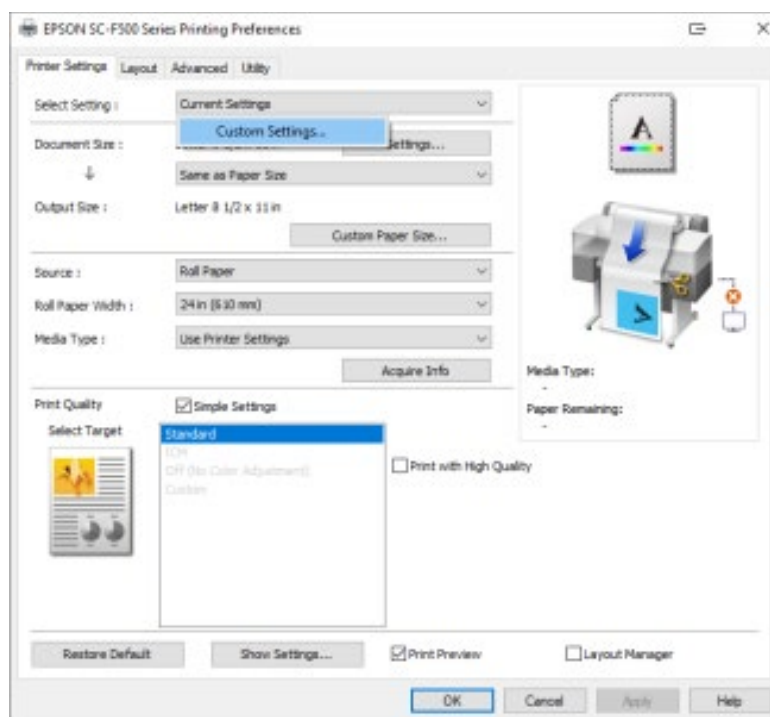
Importing ICC Profiles

- Download the ICC profiles on the JPPlus.com website, found under the "Tech Docs/Downloads" Tab.
- Place the downloaded ICC profile folder onto the desktop of the computer, or a location easily accessible for install.
- Use the Compressed Folder Tools on your computers operating system to decompress the compressed (zipped) ICC profiles folder, then open the new decompressed ICC profiles folder.
- Right mouse click on the file, then select "Install Profile".

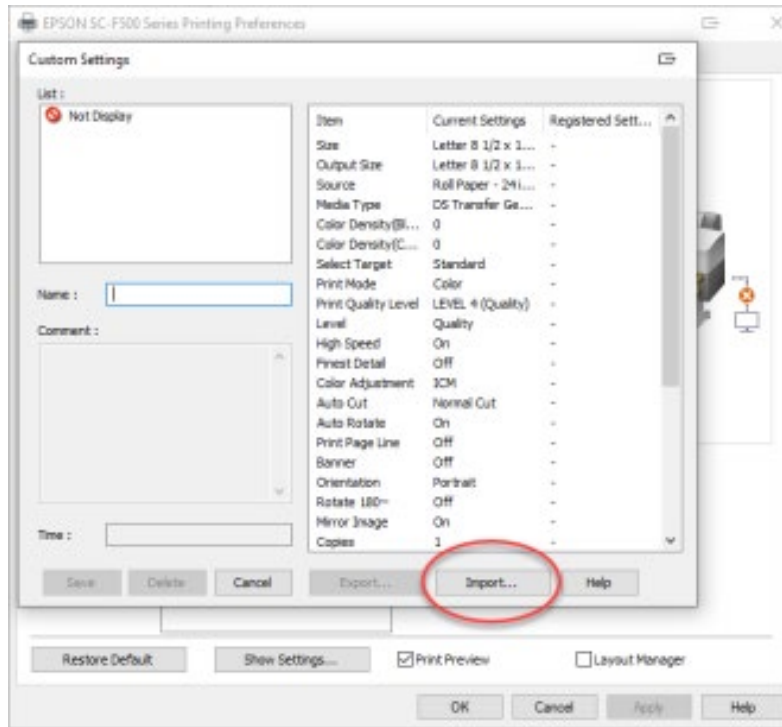


Installing the Presets

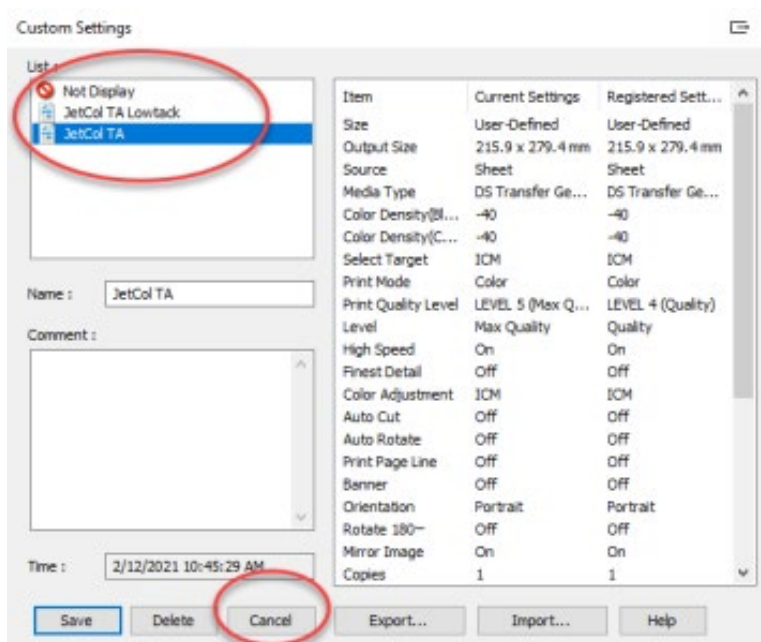
- Open your design software (e.g. Photoshop, Illustrator, CorelDraw, Affinity Designer, etc.)
- Open the artwork in the design program. Make any changes/adjustments needed, if necessary. When the artwork is ready to print, select the print icon, or File > Print.
- In the Print Dialog box, select the appropriate print driver under the printer pulldown menu, if necessary.
- Once the printer is selected, Click the "Preferences" or "Advanced/Custom Settings" button next to the printer name. The print driver settings window should appear. (This example shows the print driver for the Epson F570 printer.)
- In the print driver settings (Printing Preferences) window, click the "Select Setting" pulldown. Click the "Custom Settings" option.

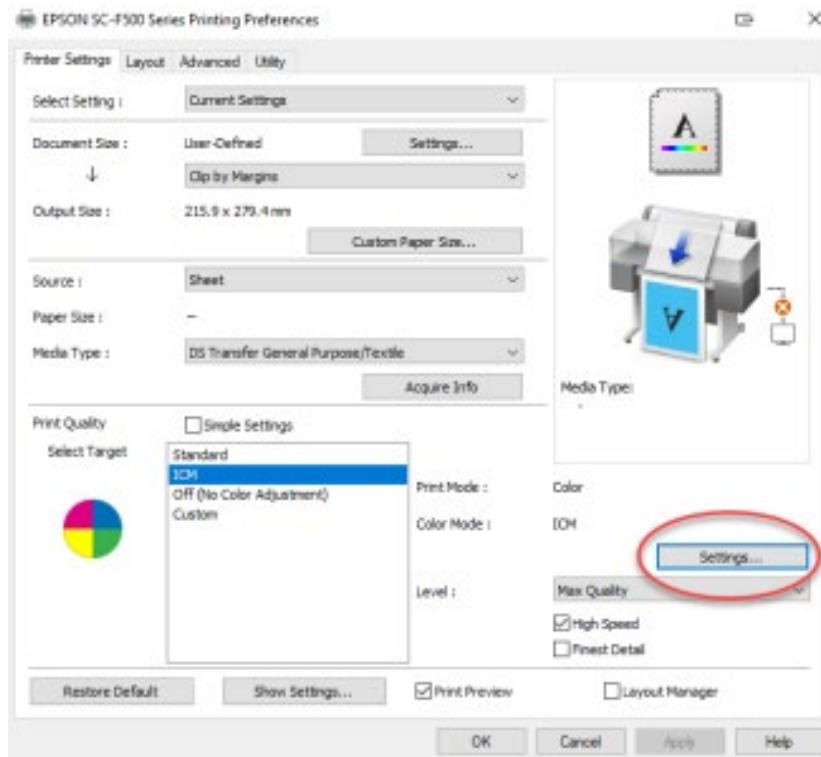


- In the Custom Settings, click the "Import" button.

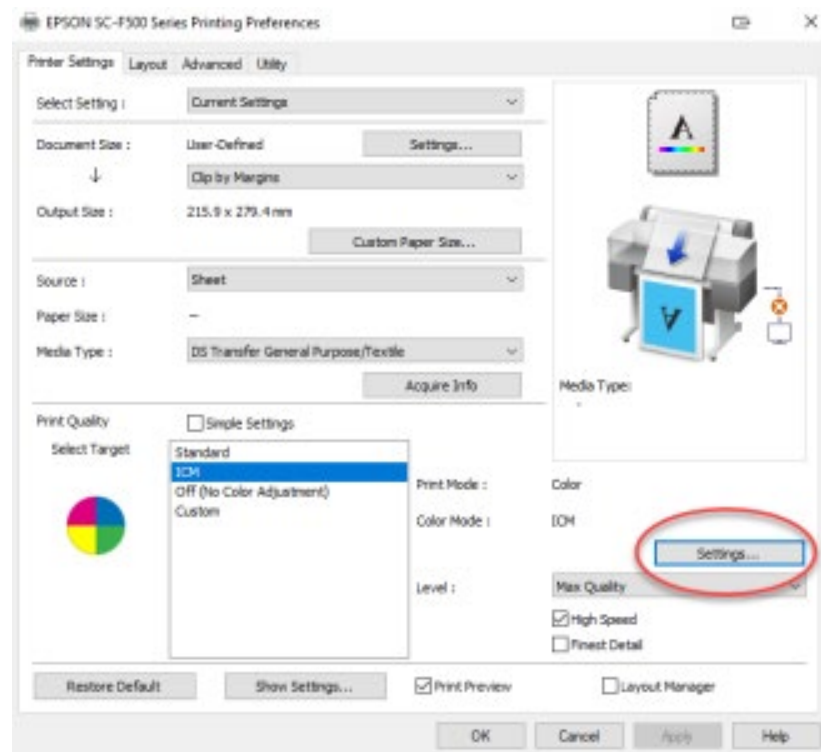


- Click "Import" and select the ".sff" file that corresponds to the paper.
- After importing the .sff file, click Cancel.

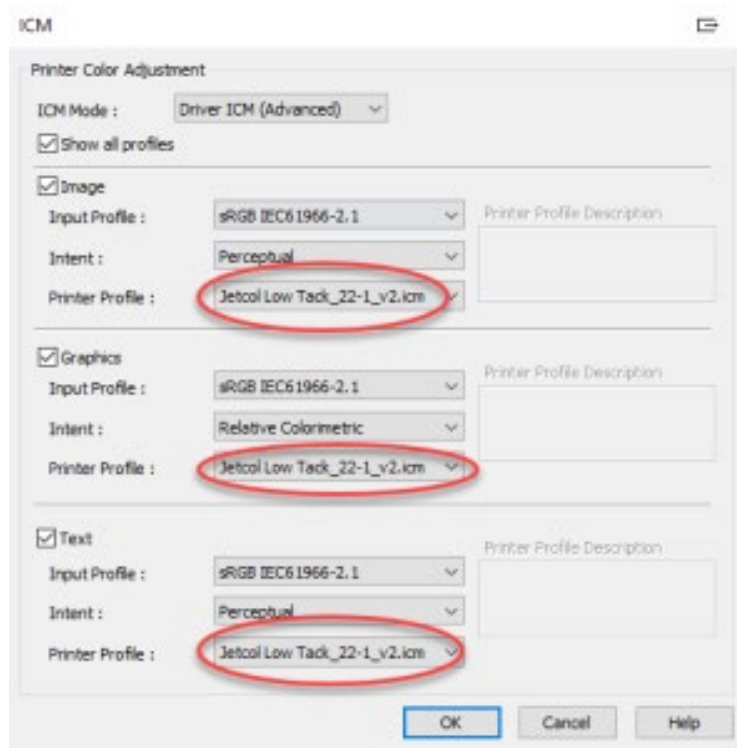




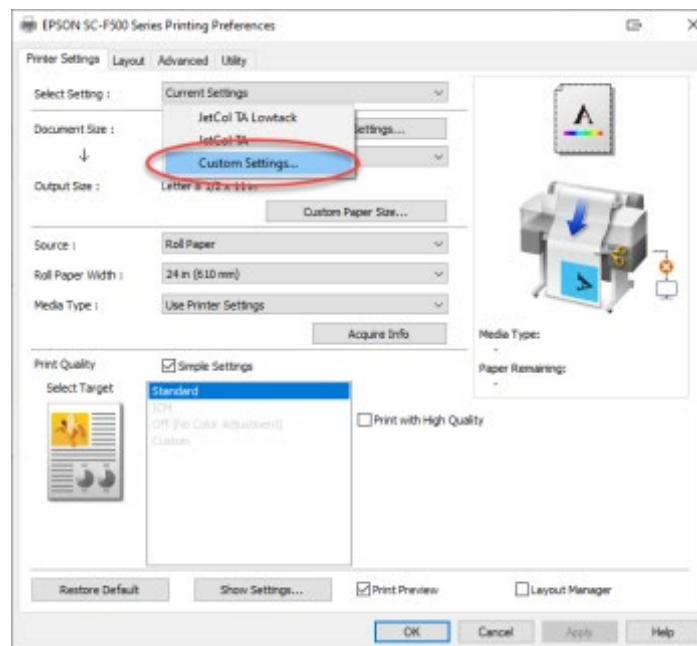
- Select the correct ICC profile that was imported on Step 1. Select Settings.



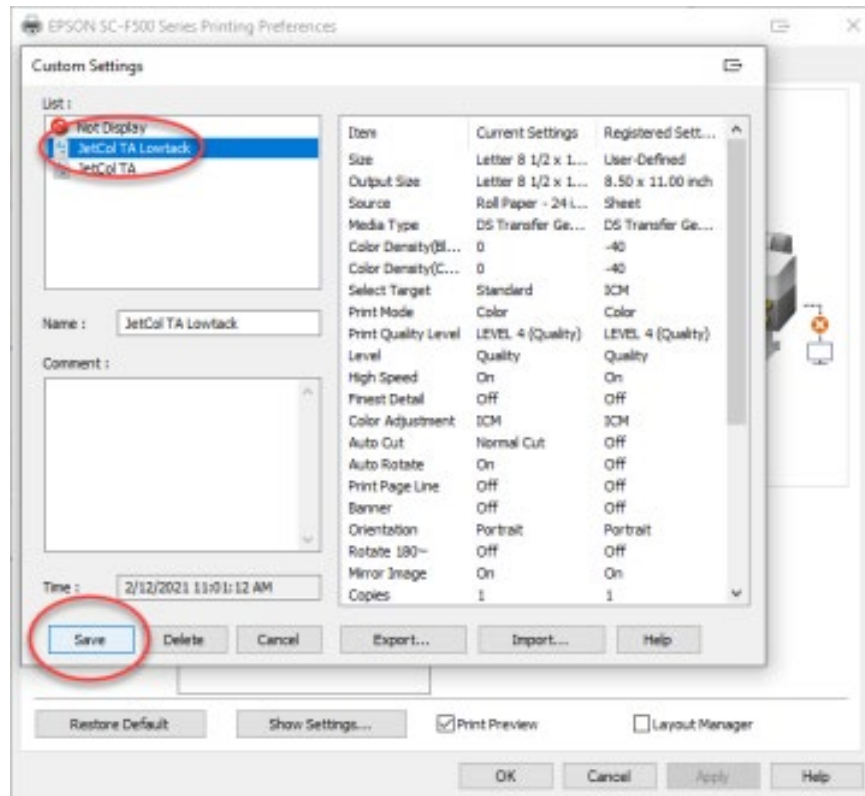
- Select the correct ICC profile for all three options (in this case- JetCol LowTack), select OK.



- To save the settings, go to "Select Setting" and select "Custom Settings".



- Select the Paper and click "Save". All of the correct settings should now be stored.



- In order to print with the correct settings, select the paper in "Select Setting". This will automatically give you all the correct settings for printing.