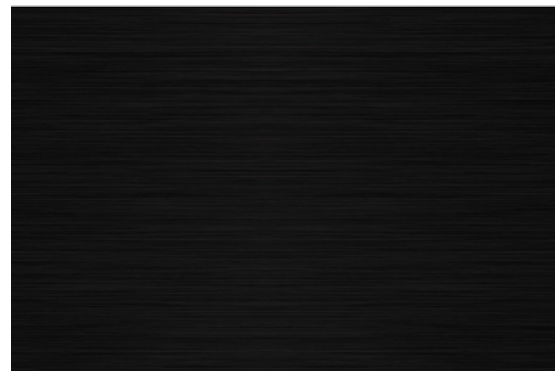


# Laser Engraving Coated Metal Sheets



## LASER ENGRAVING COATED METAL SHEETS- Laser Engraving

(examples: coated brass, steel, and aluminum sheet)



## GENERAL LASER ENGRAVING PROCESS

### Recommended Equipment & Accessories

- CO2 Laser Engraver
- Clean Towel
- Isopropyl Alcohol

<b>Recommended Settings- Laser Engraving</b>	
<b>50-60W Lasers</b>	
Laser Power	15-30%
Laser Speed	70-80%
Resolution (DPI/PPI)	500-600

### **General Laser Engraving Instructions**

- Place the sheet onto the laser bed and align to the zero point on the laser bed.
- Adjust the laser focus to the surface of the sheet.
- Once the artwork is positioned, engrave using the suggested starting settings.
  - Settings may need adjusted depending on the laser tube wattage.
- When finished, remove the sheet from the laser bed.
- If cleanup is needed, wipe the surface with a clean cotton cloth lightly misted with isopropyl alcohol.

---

### **Tips and Tricks**

- Avoid high power/low speed engraving settings to help avoid scorching and/or discoloration of the metal finish.
- If you are unsure of the best settings to use, run a laser power grid on a spare or scrap piece of the material to help determine which range of settings will work best on your specific laser machine.

---

### **Troubleshooting**

- The engraved area is charring/melting.
  - Laser power setting and/or resolution may need to be decreased.
  - Laser speed setting may need to be increased.

---

### **Templates and Images**

- Visit [jplusplus.com](http://jplusplus.com) to find the product page for this item. The product template may be found under the Tech Docs and Downloads area of the page.

---

**To order more of this product, see similar products and much more, please visit [Jplusplus.com](http://Jplusplus.com).**

For additional product support and troubleshooting, please contact JPPlus Advanced Support Team:

- Phone: 419-500-4877
- Email: [ast@jpplus.com](mailto:ast@jpplus.com)
- Schedule an appointment: [jpplusadvancedsupport.setmore.com/](http://jpplusadvancedsupport.setmore.com/)