

Quick Release Wrap

JOHNSON PLASTICS
PLUS

SUBWRAP3 | SUBWRAP6 | SUBWRAP8 | RPSUBWRAP3



INSTRUCTIONS

The Quick Release Wraps are an excellent choice for heating cylindrical sublimatable products such as drinkware in a convection oven. The wraps ensure a strong, blemish-free image transfer. The quick release snap clasp on the Quick Release Wraps allow for superior coverage during the heating process for a variety of cylindrical sublimatable products. The tool-free clasping technology makes applying and removing the Quick Release Wraps easier and more efficient than any other wrap on the market. The clasping mechanism of the Quick Release Wraps ensure a solid, tight hold on nearly the entire circumference of the product. The pressure of the closed wrap will maintain throughout the entire heating process. The wraps also comfortably accommodate most drinkware handles within the closed clasps, which can otherwise be an obstacle for other wrap types.

Wrapping the Drinkware Product

- Place the sublimation transfer sheet face down onto the drinkware. Position the transfer as needed, then secure the sheet to the drinkware with heat tape.
- Optional: Place a sheet of blowout paper over top of the transfer sheet. Ensure that the entire transfer sheet is covered with the blowout paper.
- Open up the Quick Release Wrap and place the drinkware against the silicone wrap approximately in the middle.



- Carefully wrap the silicone around the drinkware by pulling the metal clasp ends towards each other. Bring the two metal clasp ends together.



Ensure that the silicone wrap is even with the top and bottom edges of the drinkware, ideally with the edge of the silicone wrap slightly overlapping the top and bottom edges of the drinkware.

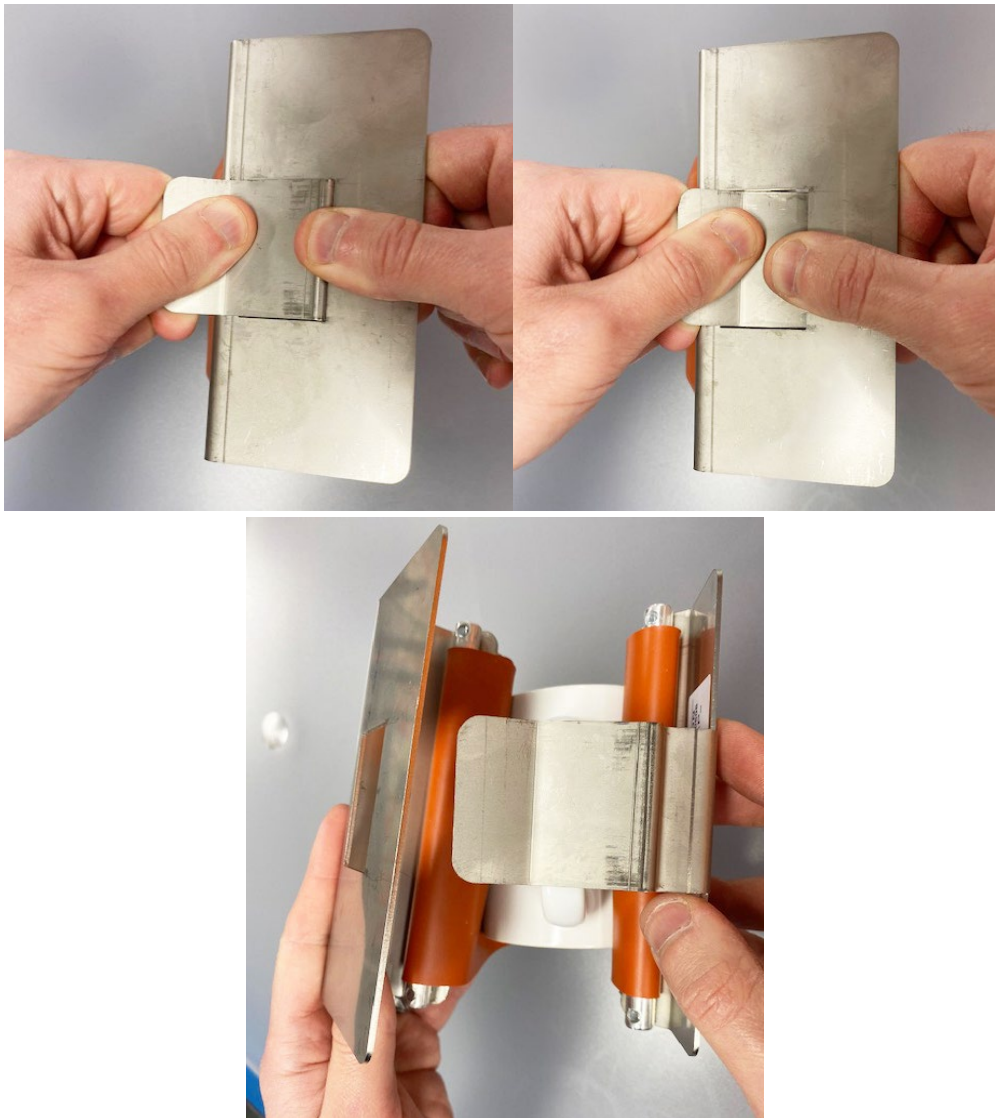
- Close the Quick Release Wrap by bringing the two metal clasp ends together, ensuring that the protruding metal end is inserted through the rectangular cutout in the opposite-side clasp. Continue to squeeze the two metal clasp ends together until the rectangular cutout clasp snaps shut at the point where the opposite-side protruding metal end creases.



- Place the drinkware with the Quick Release Wrap attached into a preheated convection oven and heat for the allotted time needed for the product.
 - For time and temperature settings as well as fabrication recommendations for the product you are working with, go to JPPlus.com. Open the product page of the specific product you are working with. Under the “Downloads” tab, download the product’s Tech Tips.
- When finished heating, open the convection oven and carefully remove the Quick Release Wrap.
CAUTION: THE QUICK RELEASE WRAP WILL BE EXTREMELY HOT!

Opening the Quick Release Wrap

- To open the Quick Release Wrap, press down where the protruding metal end crosses through the rectangular opening and simultaneously lift up on the edge of the protruding metal end and the edge of the clasp with the rectangular opening.



To order more of this product, see similar products and much more, please visit jpplus.com.

For additional product support and troubleshooting, please contact JPPlus Advanced Support Team:

- Phone: 419-500-4877
- Email: ast@jpplus.com
- Schedule an appointment: <https://jpplusadvancedsupport.setmore.com/>